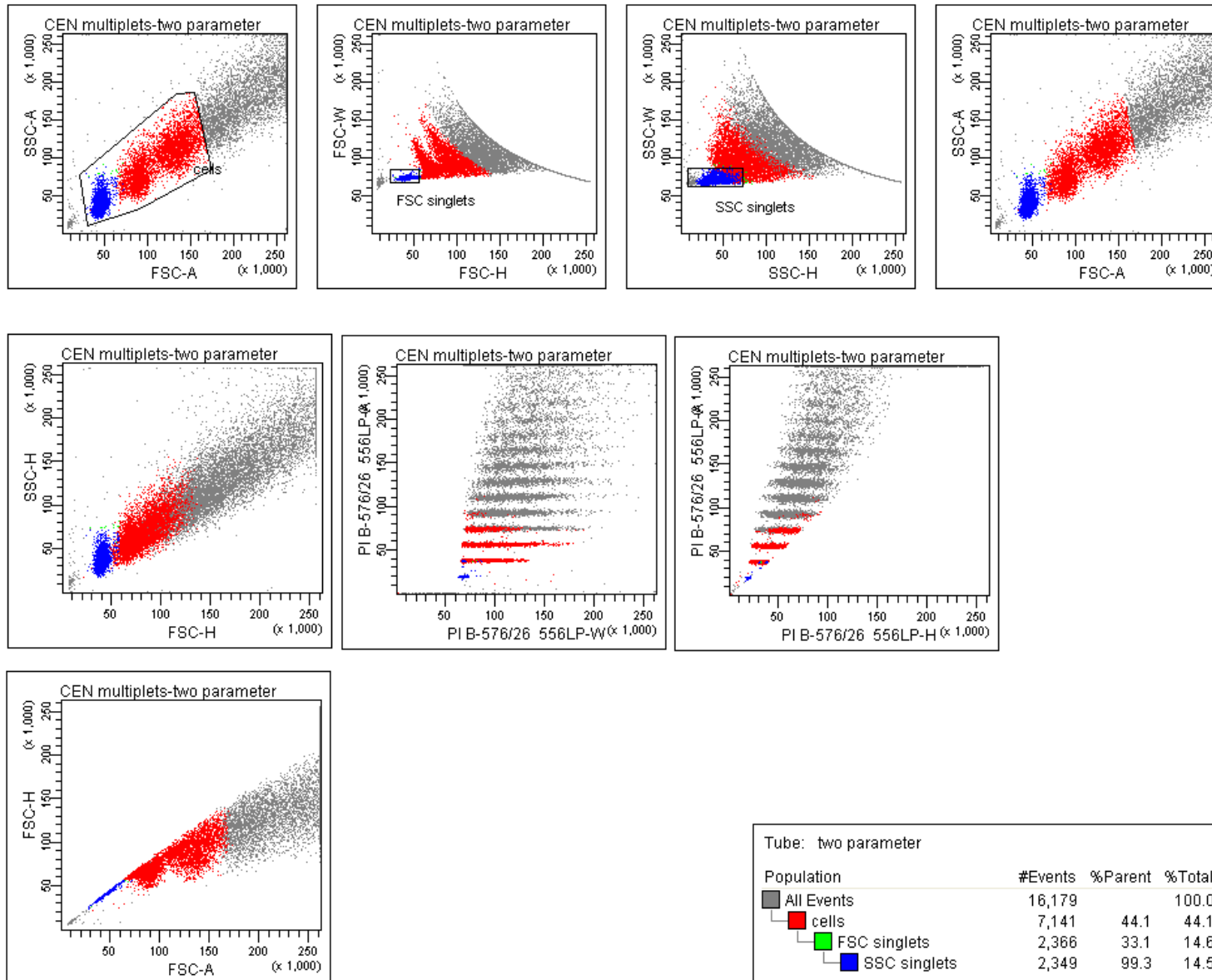


Doublet Discrimination on the FACS Aria

The following slide displays Chicken Erythrocyte Nuclei (CEN) stained with Propidium Iodide from BD's DNA QC Particles (catalog 349523). The intention is to display the various doublet discrimination methods using the Area, Height, and Width scatter parameters. The immediate observation should be that CEN make a variety of multiplets due to the sticky nature of the sample.

Special thanks to the Emory Vaccine Center's flow cytometry core for reagents and instruments.

Doublet Discrimination on the FACS Aria



Originally analyzed on 10/4/2006

suzanne.mertens@gmail.com